

AMC-ANT-2J7515M-868

868MHz ISM magnetic mount antenna

Features

- 868MHz ISM
 - 863 - 870MHz
- Magnetic mount
- High performance
- Ground plane dependent
- Certificates: IP67, IP69
- Dimensions: 80 x Ø 54mm
- Customisable cable and connector



1. Antenna and electrical specifications

Parameters	868MHz ISM antenna
Standards	LoRa, Sigfox, ZigBee, ISM
Band (MHz)	868
Frequency (MHz)	863 - 870
Return Loss (dB)	~-30
VSWR	~1.1:1
Efficiency (%)	~71
Peak Gain (dBi)	~2.5
Average Gain (dB)	~-1.4
Impedance (Ohms)	50
Polarisation	Linear
Radiation Pattern	Omni-directional
Max. Input Power (W)	25
Connector Type	SMA male standard (other connectors available)
Cable Length	300cm standard (other lengths available)
Cable Type	DACAR 302 standard (other cables available)

Antenna measurement conditions:

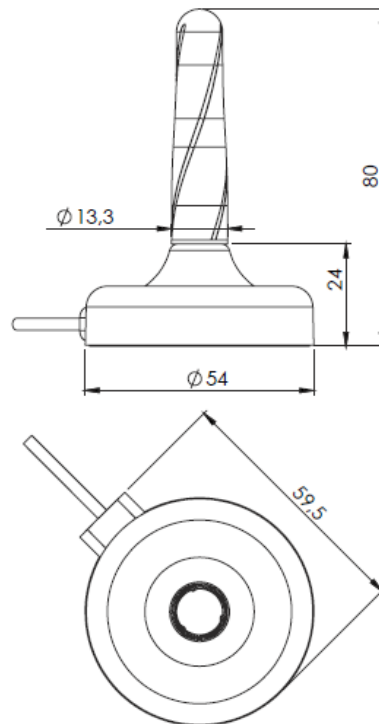
- Mounted on 30 x 30cm metal plate
- 200cm DACAR 302 cable
- Measured in certified CTIA 3D anechoic chamber



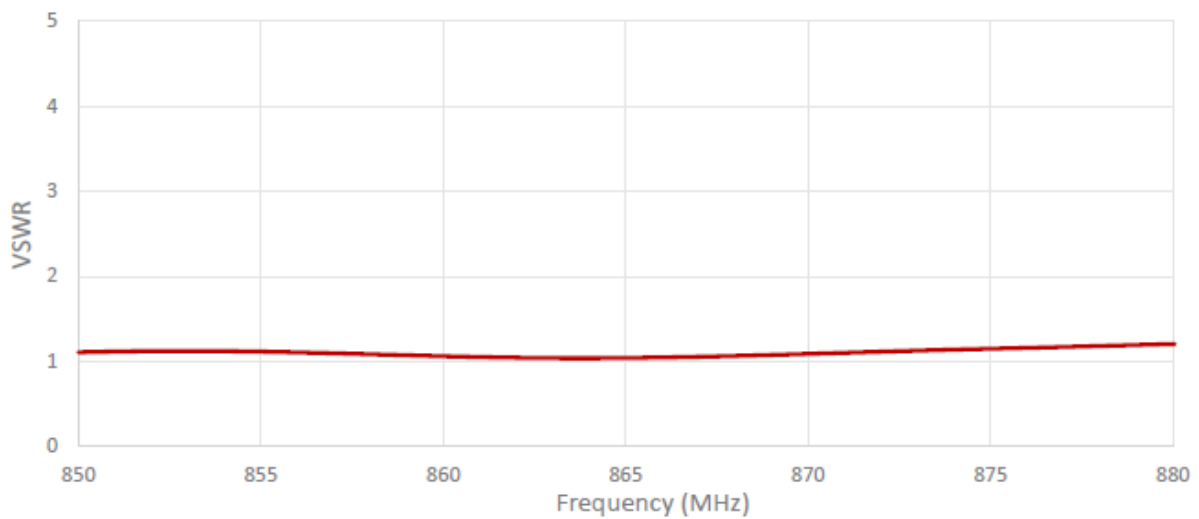
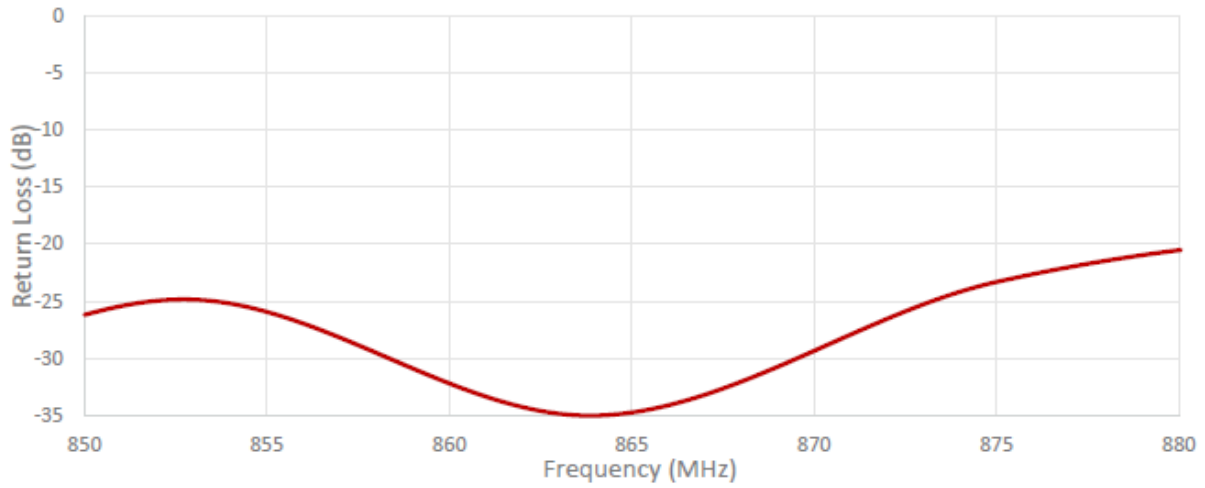
2. Mechanical and environmental specifications

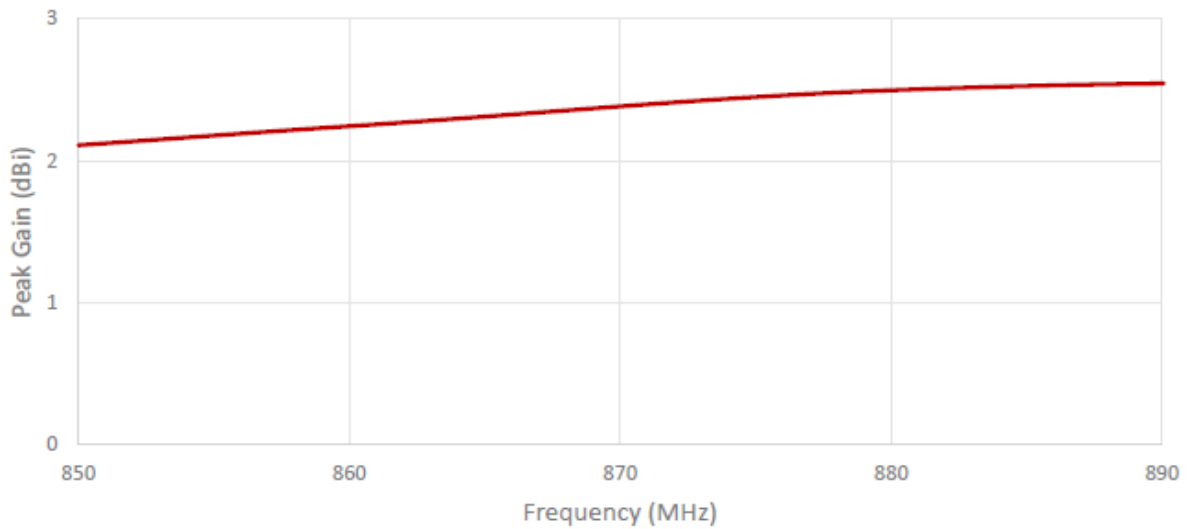
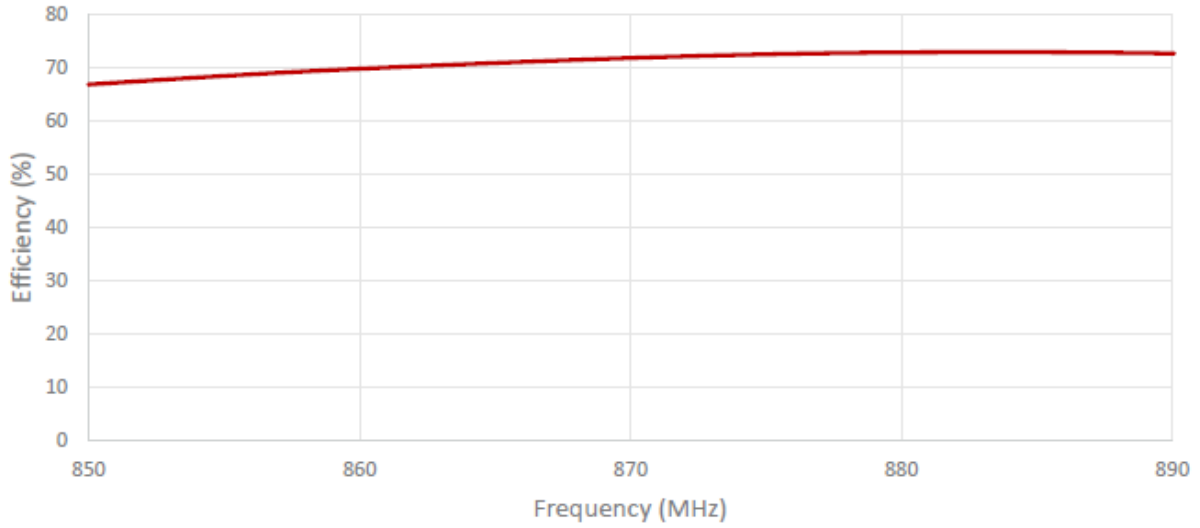
Mounting Type	Magnetic mount
Dimensions (mm)	80 x \varnothing 54
Radome	ASA
Radome Colour	Black
Antenna Base	Zamak
Gasket	TPE
Operating Temperature (°C)	-40 to +85
Storage Temperature (°C)	-40 to +85
Substance Compliance	RoHS
Certificates	IP67, IP69

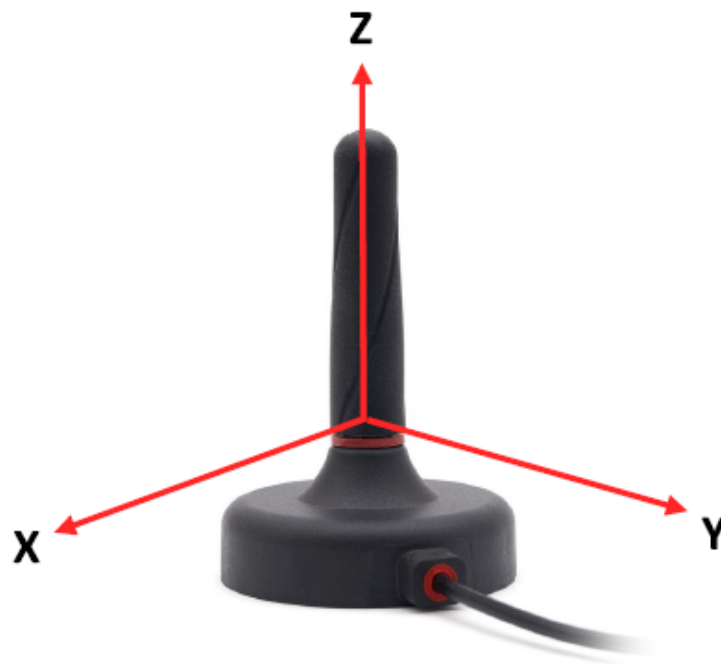
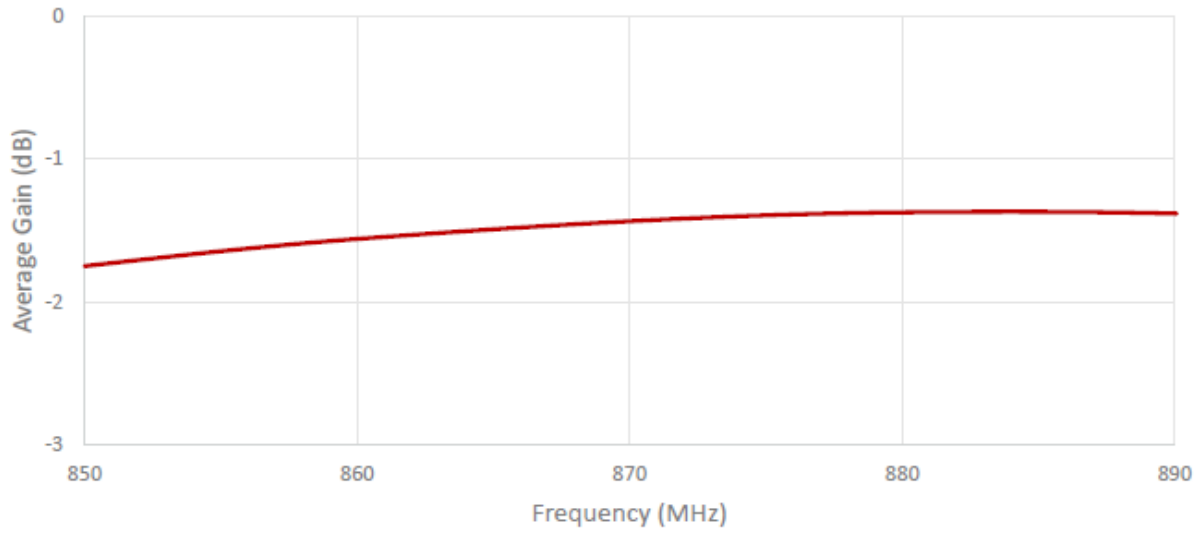
3. Antenna drawings



4. Antenna parameters

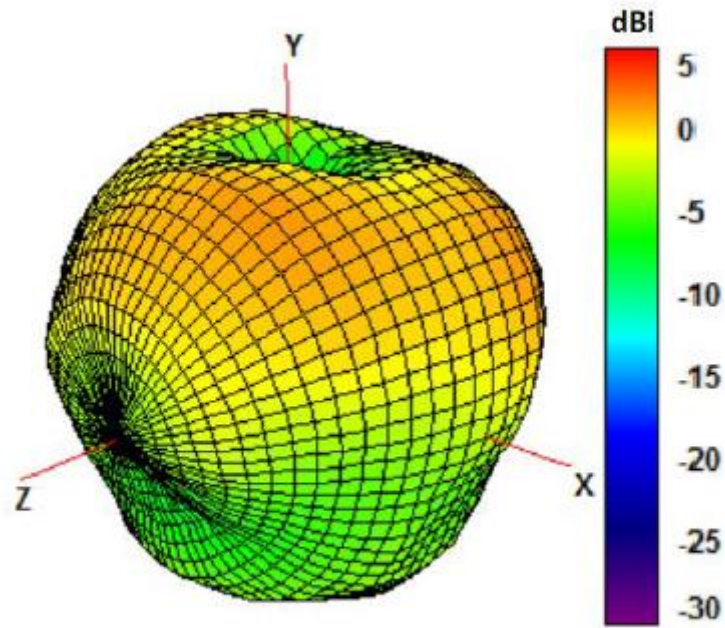






Radiation pattern reference





868 MHz Radiation pattern

