

AMC-ANT-2J6926B

Iridium certified screw mount antenna

Features

- Iridium
 - 1616 – 1627MHz
- Iridium certified
- Screw mount
- Low profile
- High gain
- Anti-rotation mechanism
- Ground plane independent
- Certificates: IP67, IP69
- Dimensions: 80 x 74 x 25.6mm
- Customisable cable and connector



1. Antenna and electrical specifications

Parameters	Iridium antenna
Standards	Iridium
Band (MHz)	1621
Frequency (MHz)	1616 - 1627
Return Loss (dB)	~-12.5
VSWR	~1.6:1
Efficiency (%)	~76.6
Peak Gain (dBi)	~4.5
Average Gain (dB)	~-1.2
Polarisation	RHCP
Radiation Pattern	Hemispherical
Connector Type	SMA male standard (other connectors available)
Cable Length	3 metres standard (other lengths available)
Cable Type	LMR195 standard (other cables available)

Measurement conditions:

- Mounted on metal plate of 70 x 70mm
- 2 metres of LMR195 cable
- Measured in certified CTIA 3D anechoic chamber

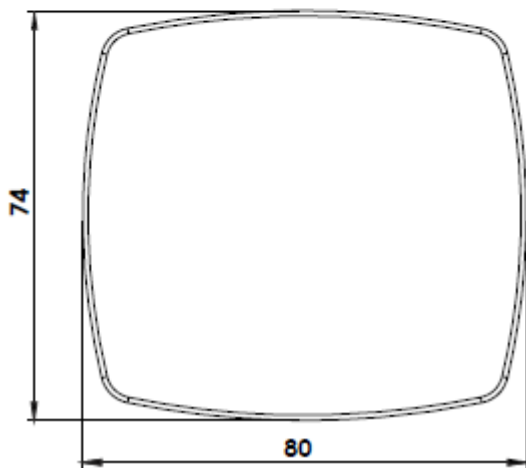
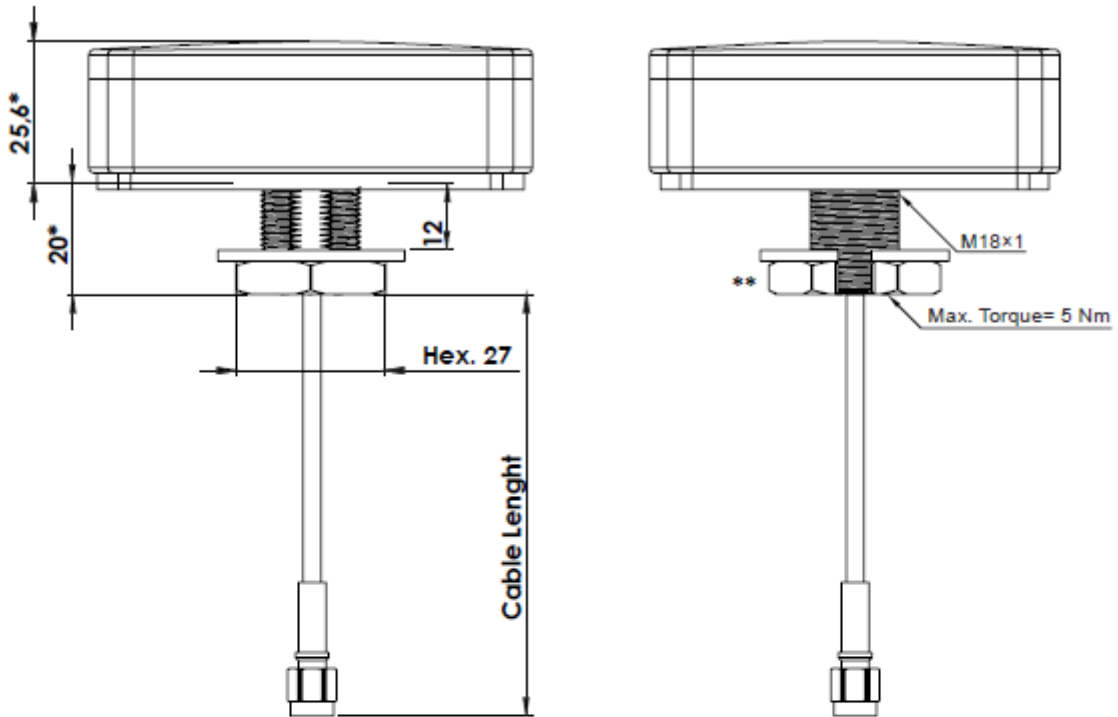


2. Mechanical and environmental specifications

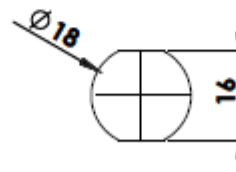
Mounting Type	Screw mount
Dimensions (mm)	80 x 74 x 25.6
Max. Tighten Torque (Nm)	5
Radome Type	ABS UV stable
Radome Colour	Black or White
Operating Temperature (°C)	-40 to +85
Storage Temperature (°C)	-40 to +85
Substance Compliance	RoHS
Certificates	Iridium Certified, IP67, IP69



3. Antenna drawing



Mounting hole

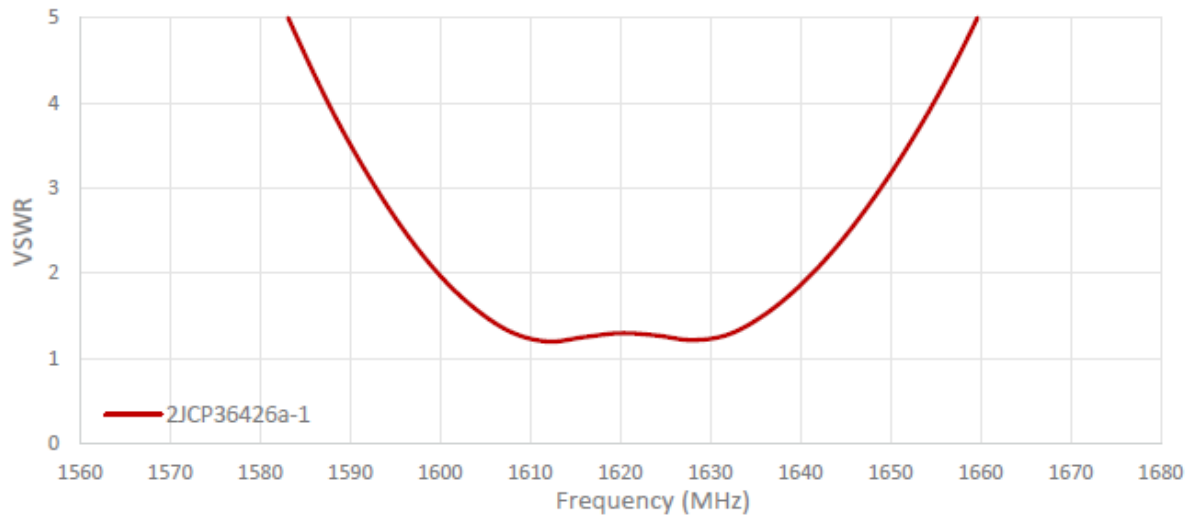
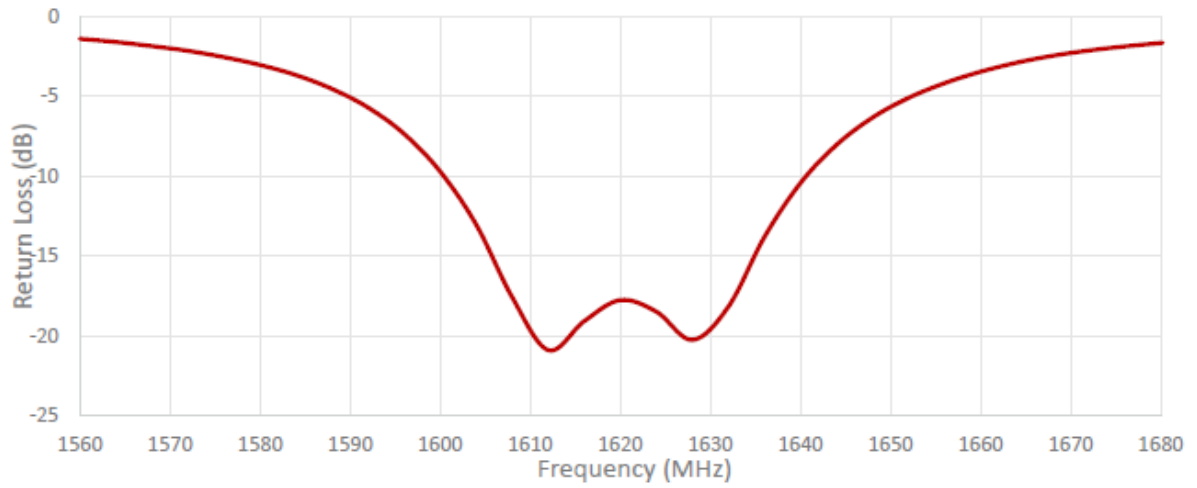


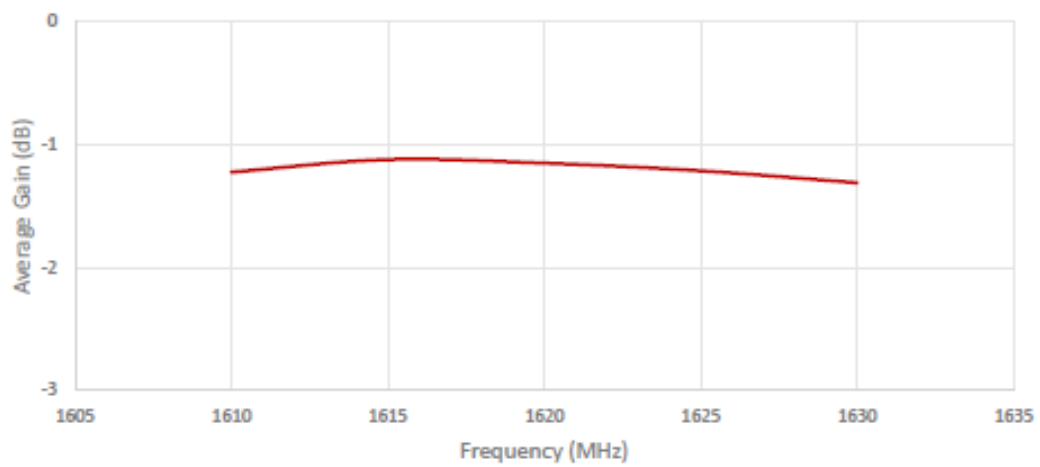
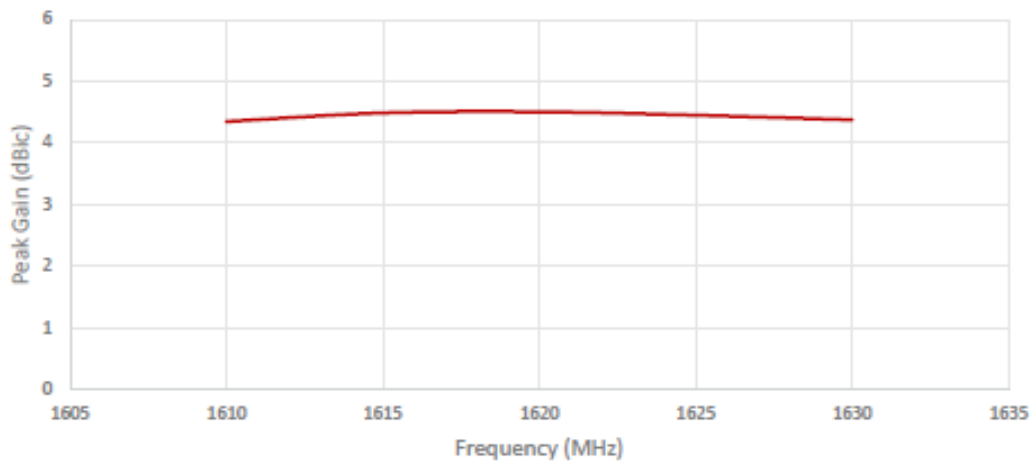
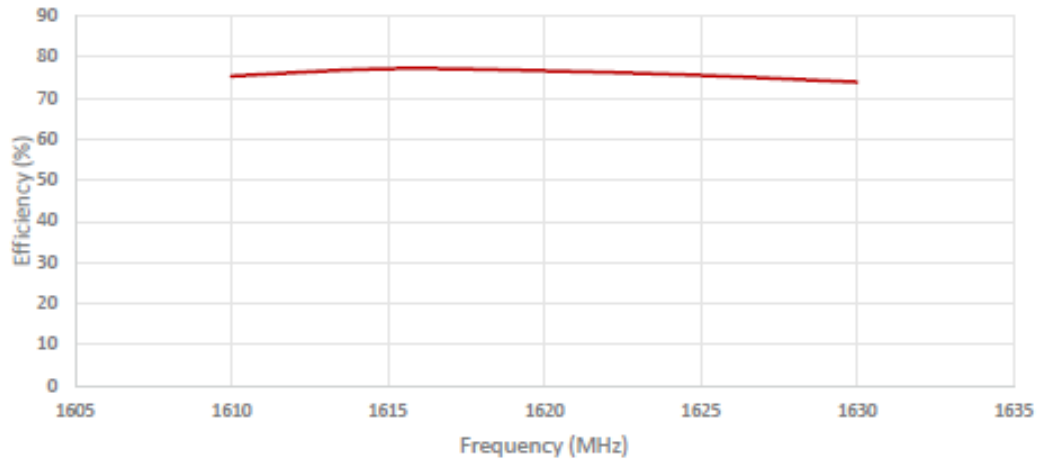
Max. mounting thickness 12mm
Note: Dimensions are in millimeters
*Dimensions are after mounting
**Max. Torque= 5 Nm

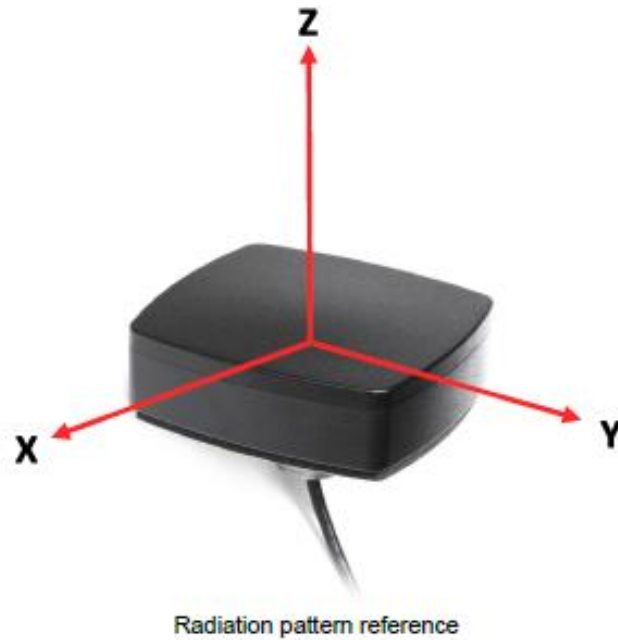


4. Antenna parameters

Cable 1: IRIDIUM







Cable 1: IRIDIUM

